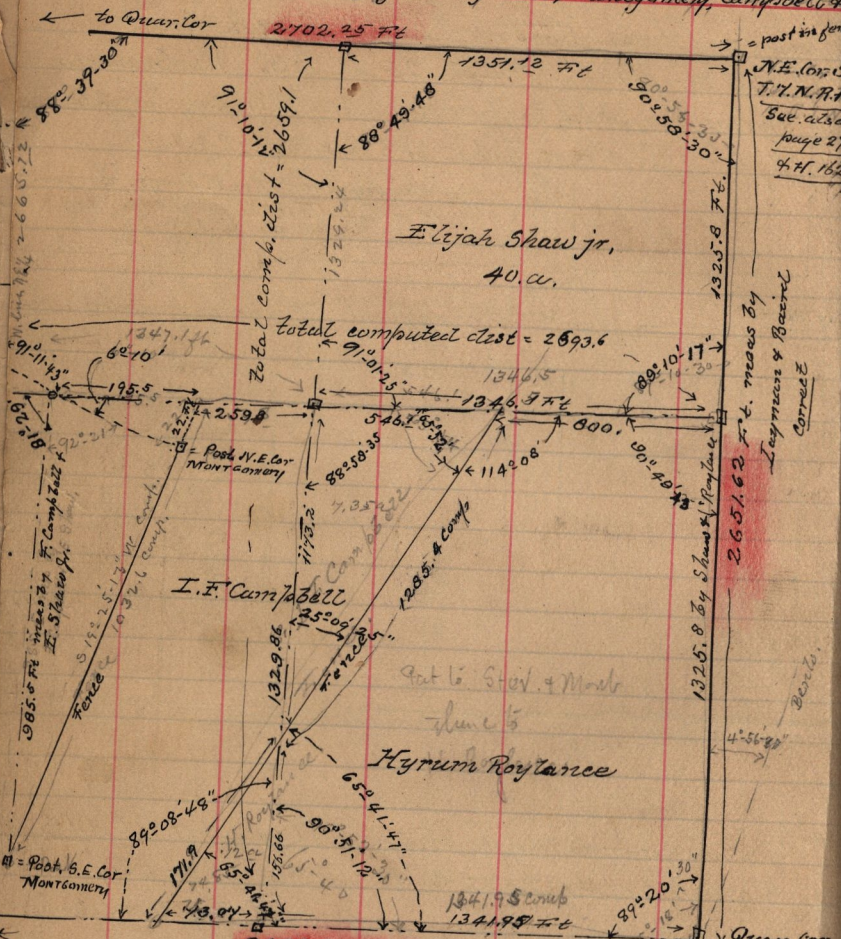


July 30<sup>th</sup> 1893. Survey for Roylance, Montgomery, Campbell &c



M. 660.22

985.6 Ft meas by F. Campbell & I. Shaw

91° 01' 30" S.W. cor N.E. 1/4 Sec 29 T. 7. N. R. 1. W

See G. P. 36

see Plat Book pages 82